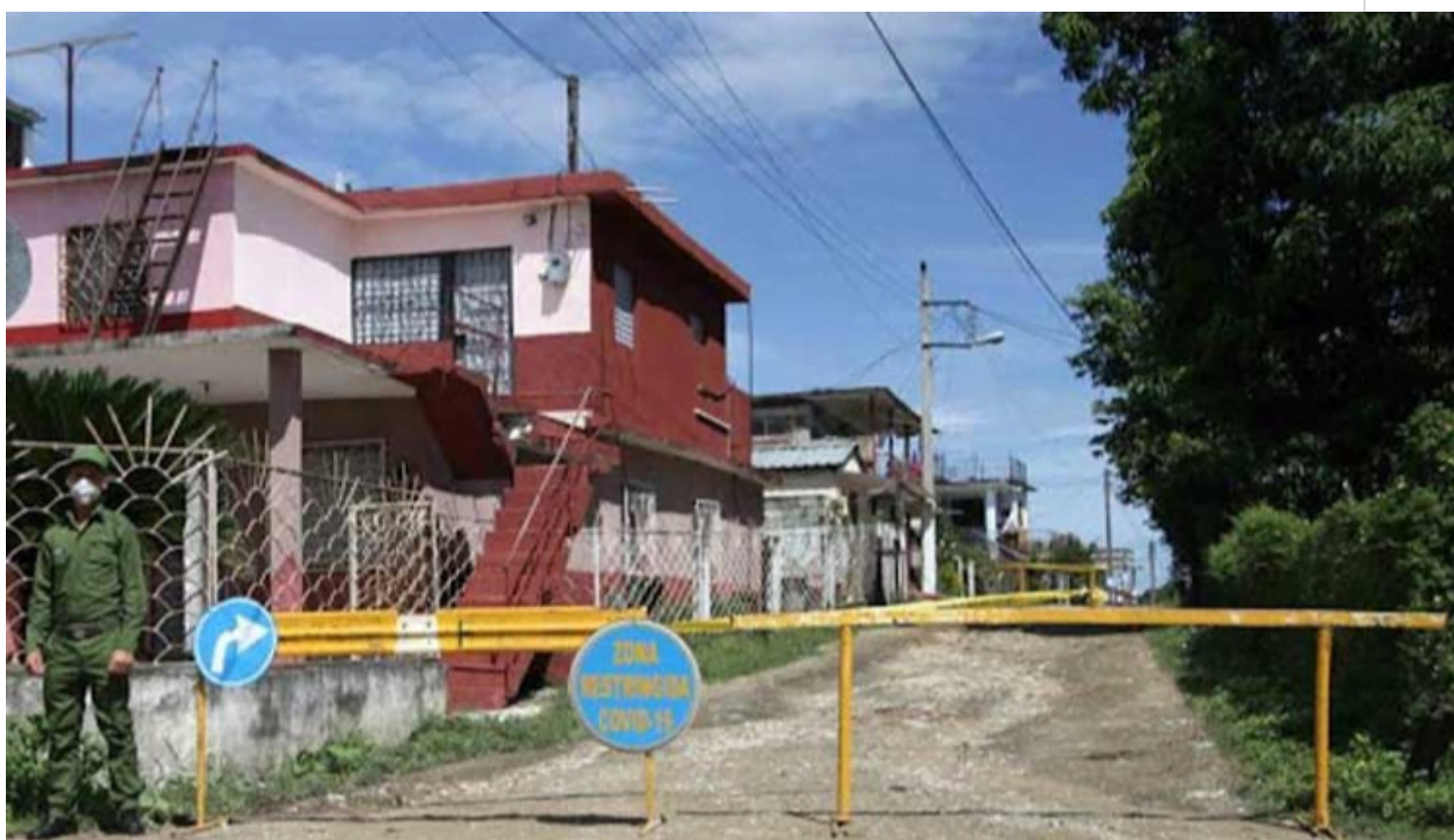


Sancti Spíritus has complex situation with COVID-19 outbreak



Sancti Spíritus presents today the most complex epidemiological situation in the country in view of the COVID-19 outbreak. (Photo: Prensa Latina)

Sancti Spíritus, October 18 (RHC)-- The capital of the province of Sancti Spíritus in a phase of limited native transmission, presenting the most complex epidemiological situation of the country before the resurgence of COVID-19, assured the director of health of the province, Manuel Rivero.

The director pointed out that the central province reports the highest incidence rate of the new coronavirus SARS-CoV-2, which causes the pandemic, with 59.2 per 100 thousand inhabitants, when 12 new cases were confirmed the day before: 11 in Sancti Spiritus and one in Yaguajay.

He explained that the municipality of Sancti Spiritus, with more than 100 thousand inhabitants and the center of the contagions, has an extremely delicate situation.

Faced with this situation, the Provincial Defense Council ordered strong measures for the province to cut off transmission and save lives, such as restricting the mobility of people and vehicles, prohibiting access to other locations, and applying fines to those who do not comply with current regulations.

<https://www.radiohc.cu/en/noticias/nacionales/237145-sancti-spiritus-has-complex-situation-with-covid-19-outbreak>



Radio Habana Cuba