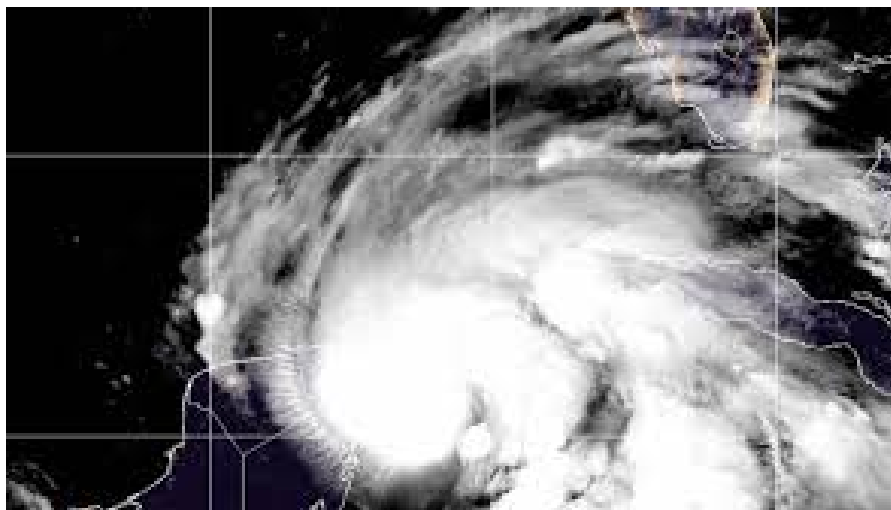


Helene strengthens into a hurricane



Washington, September 25 (RHC)-- Tropical Storm Helene strengthened into a Category 1 hurricane on Wednesday as it passed through the Gulf of Mexico and the Caribbean Sea, where several parts of Florida, Cuba and Mexico are under alert for the possible impact of the system, which could make landfall in the United States as a major hurricane, according to the National Hurricane Center (NHC).

Helene is advancing through the Yucatan Peninsula heading north with maximum winds of 130 kilometers per hour, the National Hurricane Center in Miami reported today.

Helen is moving north-northwest at 17 kilometers per hour, and its speed is expected to increase. A turn will take the center of Helene through the eastern Gulf of Mexico and into the Great Florida Bay.

NOAA and Hurricane Hunter aircraft data indicate that maximum sustained winds have increased with stronger gusts. Additional strengthening is forecast.

As of the 11 a.m. ET advisory, the system was located 85 miles north-northeast of Cozumel, Mexico, and 500 miles south-southwest of Tampa, Florida.



Radio Habana Cuba