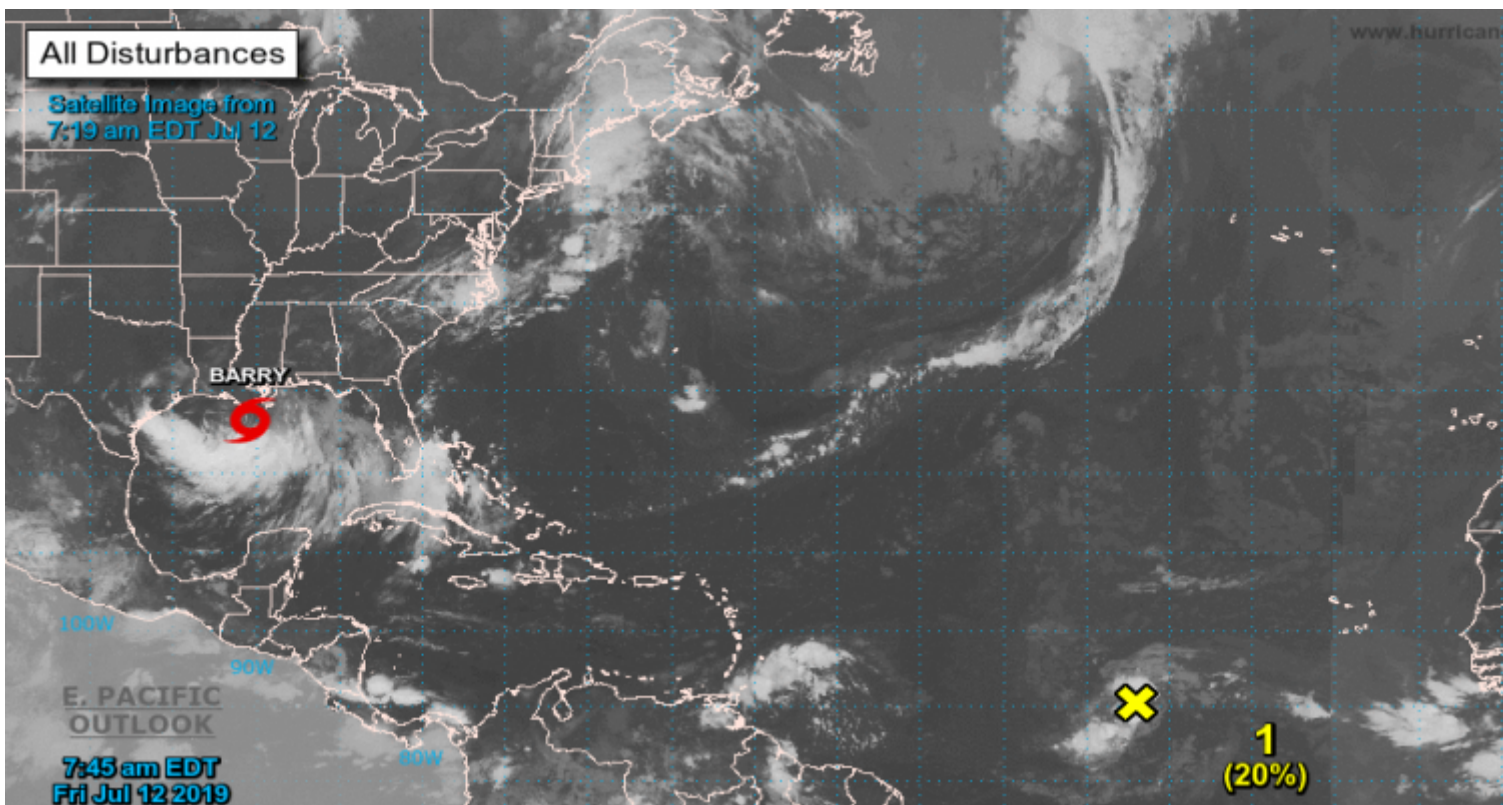


Trump declares state of emergency in Louisiana ahead of Tropical Storm Barry



Washington, 12 jul (RHC) U.S. President Donald Trump declared a State of Emergency in Louisiana ahead of Tropical Storm Barry, the White House said in a statement late on Thursday.

The declaration frees up money and federal resources that the state can use in coping with the storm and its aftermath.

The National Hurricane Center reported:

At 700 AM CDT (1200 UTC), the broad circulation center of Tropical Storm Barry was located near latitude 28.2 North, longitude 90.3 West. Barry is moving toward the west-northwest near 5 mph (7 km/h). A track toward the northwest is expected to begin later today, followed by a turn toward the north on Saturday. On the forecast track, the center of Barry will be near or over the central or southeastern coast of Louisiana tonight or Saturday, and then move inland over the Lower Mississippi Valley on Sunday.

Reports from NOAA and Air Force Reserve Hurricane Hunter aircraft indicate that the maximum sustained winds remain near 50 mph (85 km/h) with higher gusts. Some strengthening is expected during

the next day or so, and Barry could become a hurricane tonight or early Saturday when the center is near the Louisiana coast. Weakening is expected after Barry moves inland.

Tropical-storm-force winds extend outward up to 175 miles (280 km) to the east of the center. An United States Geological Survey station near Point a la Hache, Louisiana recently reported sustained winds of 38 mph.

<https://www.radiohc.cu/index.php/en/noticias/ciencias/195925-trump-declares-state-of-emergency-in-louisiana-ahead-of-tropical-storm-barry>



Radio Habana Cuba